

Youth Philharmonic Audition 2025-26

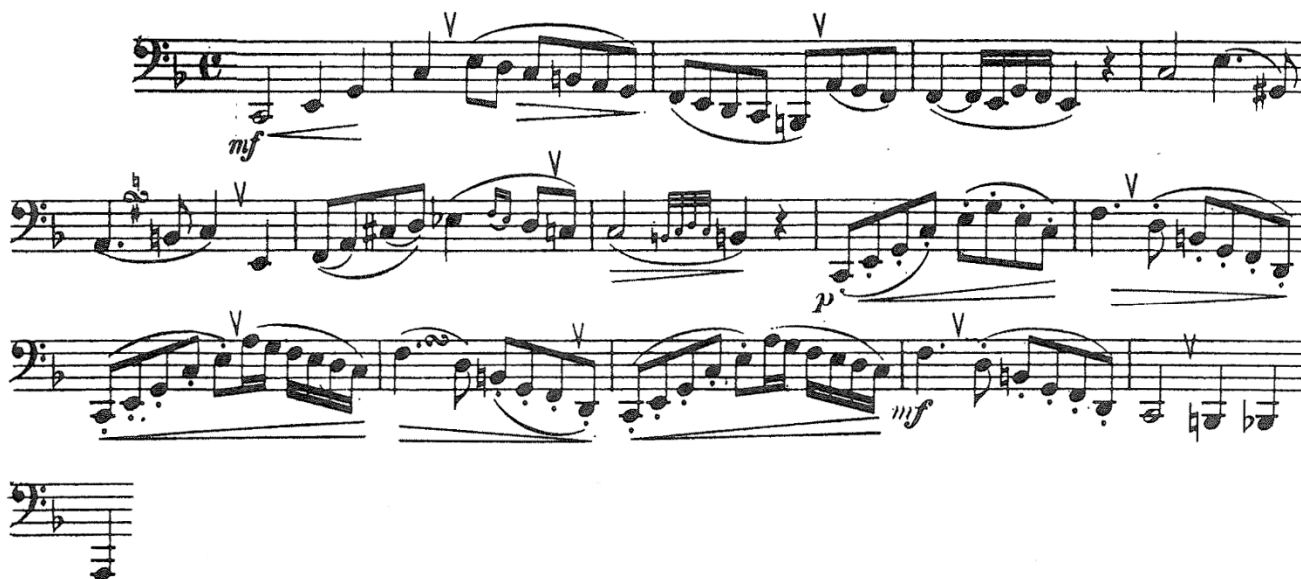
TUBA

You must be prepared to play all of the specified requirements when auditioning. Please understand that the audition committee may choose to omit some items during the actual audition.

The audition committee will select from the following:

1. Scales will be chosen by the audition committee from ALL MAJOR keys. Scales are to be performed from memory, 2 octaves (where possible), with arpeggios. Scales must be performed in complete octaves at a minimum tempo of MM quarter note = 120. The scale pattern is ♩ ♩ ♩ ♩ ♩. The arpeggio pattern is ♩ ♩ ♩. The scales are to be tongued ascending and slurred descending.
2. Provided excerpts. Please take the time to study these excerpts carefully. Style, character, and musicianship will be as important as intonation, tempo, and technique.
3. A short sight reading exercise(s) to demonstrate the student's reading ability.

No. 1 ♩ = 76-108



Youth Philharmonic Audition 2025-26

TUBA

No. 2 Title: La Forza Del Destino – Verdi

♩ = 124

ff

mf

p

f

p

No. 2 Title: Lohengrin, Introduction to Act III - Wagner

♩ = 84

ff

ff

Λ

ff